

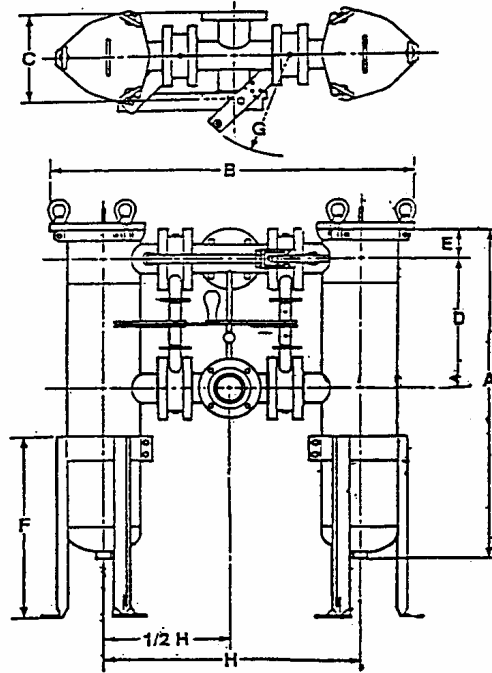


**Custom Service & Design, Inc.**

P.O. Box 214923  
AUBURN HILLS, MI 48321

PHONE: 248.340.9005  
FAX: 248.340.9002

**DUPLEX FILTERS**  
**BULLETIN: DPLX01-1**



*ANY VESSEL DESIGN MAY BE  
DUPLEXED*

MODEL	FLANGE SIZE	12	15	18	30	B	C	D	E	F	G	H
4	1 1/2"	18"				29-1/2	9	15	2-1/2	14	9-1/2	22-1/4
	2"	18" 22 1/8"				31-3/4	11	17	3-3/8	14	9-1/2	24-1/2
6	1 1/2"			25 3/4"	37 3/4"	34-3/4	9	15	2-1/2	15	12-1/2	24-1/4
	2"			25 3/4"	37 3/4"	37	11	17	3-3/8	17	12-1/2	26-1/2
				27 5/8"	39 5/8"							
				27 5/8"	39 5/8"							
8	2"		23 3/4"		38 3/4"	44-3/4	9	15	2-3/4	15	12-1/2	32-1/4
	3"		23 3/4"		38 3/4"	47	11	17	3-3/4	17	12-1/2	34-1/2
	4"		25 5/8"		40 5/8"	49-1/2	13	18	3-3/4	18	12-1/2	37
			25 5/8"		40 5/8"							

**STANDARD FEATURES:**

- ⇒ 2 HOUSINGS WITH COMMON CONNECTIONS
- ⇒ CONTINUOUS FLOW RATES
- ⇒ SINGLE OR INDEPENDENT HANDLE CONVERSION
- ⇒ CARBON OR STAINLESS STEEL CONSTRUCTION
- ⇒ 150 TO 500 PSI PRESSURE RATING
- ⇒ QUICK SWING CLOSURE WITH EYE NUTS
- ⇒ O-RING SEALS - LID & BASKET
- ⇒ DIFFERENTIAL, DRAIN, AND VENT PORTS
- ⇒ STAINLESS STEEL STRAINER BASKETS

**OPTIONS:**

- ⇒ AUTOMATED OPERATION
- ⇒ "O" RING SEAL MATERIALS
- ⇒ ASME STAMP
- ⇒ INLET/OUTLET LOCATIONS
- ⇒ VARIOUS RESTRAINER BASKETS
- ⇒ FLANGE OR CONNECTION SIZE
- ⇒ SKID MOUNTED FOR DURABILITY
- ⇒ PUMPING PACKAGES
- ⇒ ELECTRICAL PNEUMATIC CONTROLS